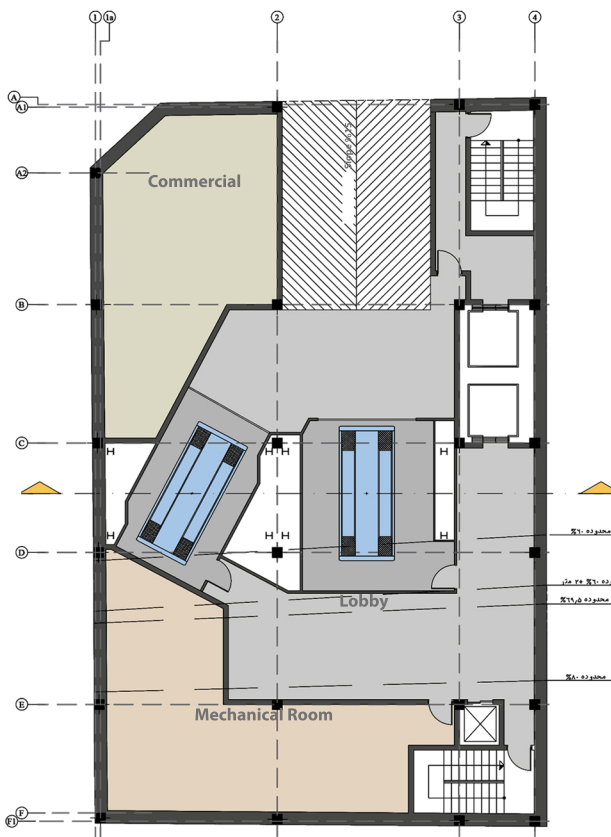
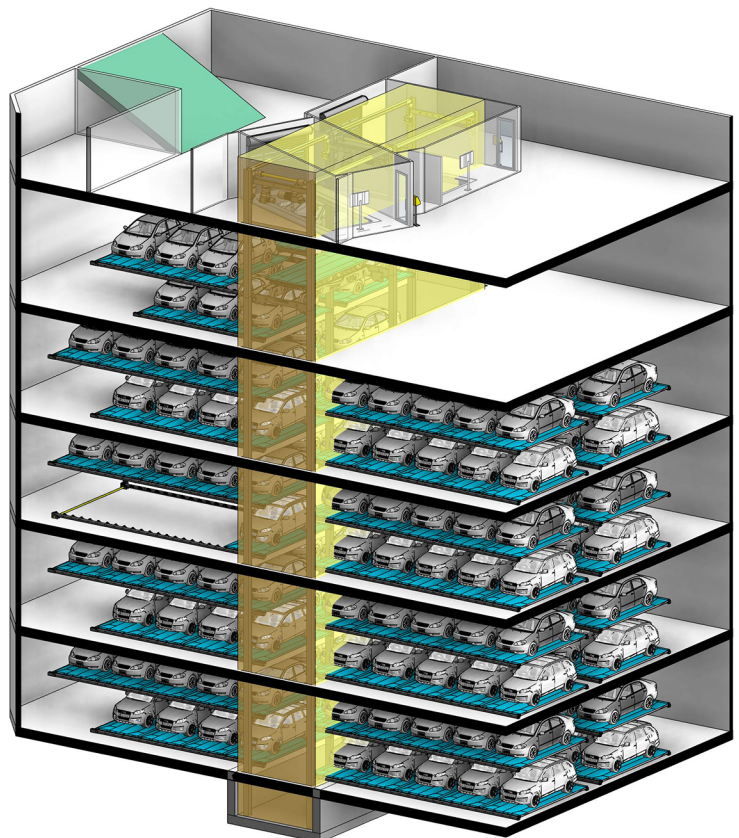


Iran, Tehran, Elahie
Maryam Commercial
Fully Automated Parking System



1- Basement Floor Plan
Delivery room



- Capacity : 152 cars / 92 Sedan , 68 SUV
- System Type : Parkule 155 , 2 System
- Building footprint area : 471 m²
- Building depth : -21.93 m
- Number of parking floors : 4 underground
- Entry-Exit & Lobby : -1 Basement
- Equipped with turn-table

PERFORMANCE

- Entry-Exit room with turntable
- Shortest parking time: 30 sec.
- Longest parking time: 120 sec.

STANDARDS

- EN 14010 - CE Certificate (CE: "European Conformity")

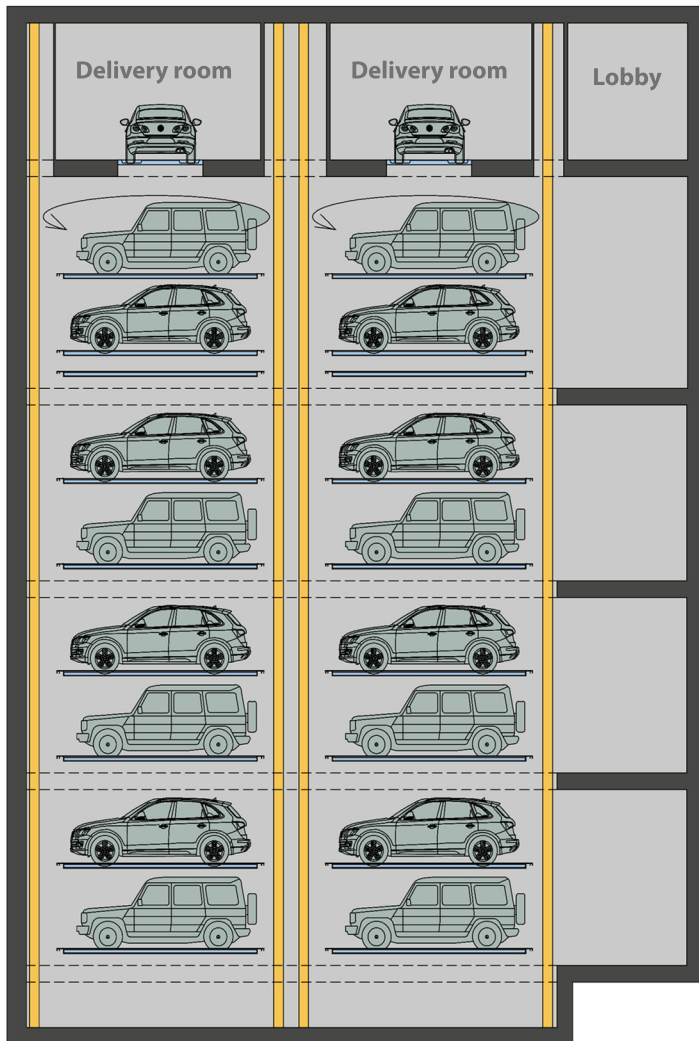
Iran, Tehran, Elahie
 Maryam Commercial
 Fully Automated Parking System

OPERATION

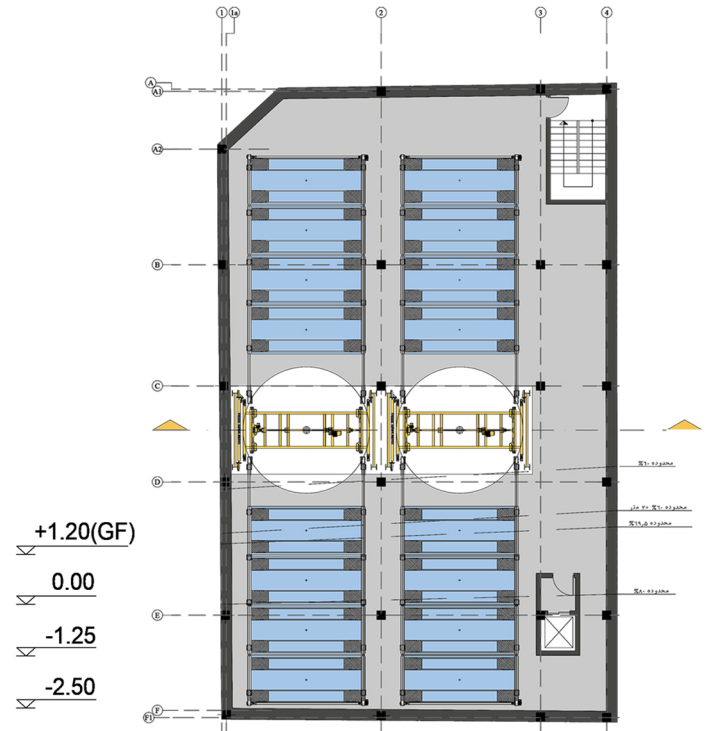
- Operation without personnel.
- Ventilation and lighting savings
 (No exhaust gas formation, no people inside the parking space)
- High insurance availability thanks to high safety level
- Remote access over the internet.

STANDARDS

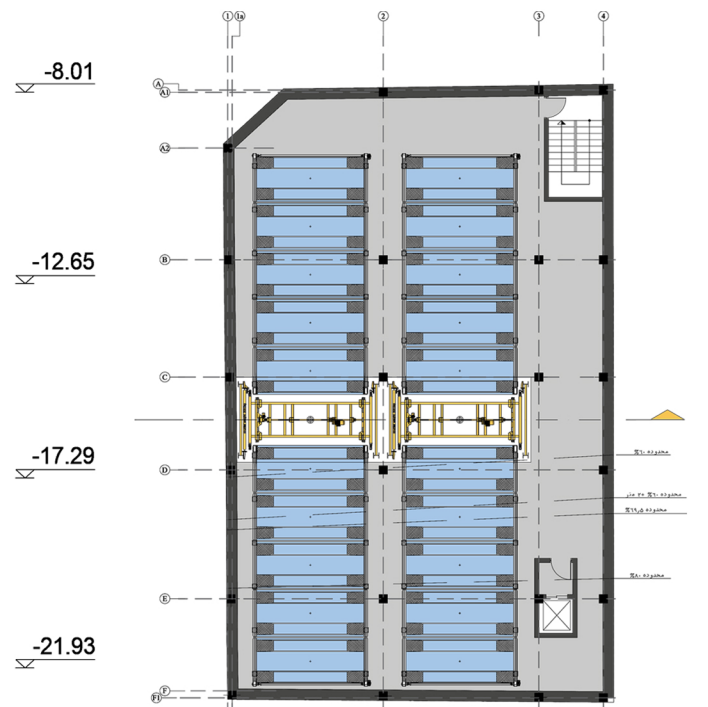
- VDI 4466 Blatt 1:2001-01
- EN 14010 - CE Certificate
 (CE: "European Conformity")



Section



2- Basement Floor Plan
 Automated Paking System
 Turning Level



5- 2- Basement Floor Plan
 Automated Paking System