

Iran, Tehran, Dibaji

Dibaji Residential

Fully Automated Parking System



Construction year : 2021
Employer : Private

Capacity : 22 cars
System : Parkule 152 , 1 system

CAPACITY

- Building footprint area: 265 m²
- Building depth: -9.20 m
- Number of parking floors: 4 underground
- Entry-Exit & Lobby: Ground floor
- Equipped with turn-table



OPERATION

- Operation without personnel.
- Ventilation and lighting savings (No exhaust gas formation, no people inside the parking space)
- High insurance availability thanks to high safety level
- Remote access over the internet.

PERFORMANCE

- Entry-Exit room with turntable
- Shortest parking time: 30 sec.
- Longest parking time: 120 sec.



COMFORT

- Assigned special parking space for office personnel.
- Parking without manoeuvring difficulties and without using inconvenient ramps and corridors for getting to/exiting from the parking floors and for parking.
- Safe and secure parking away from risks such as theft, accidents, etc.

STANDARDS

- EN 14010 - CE Certificate (CE: "European Conformity")



SAFETY

- 2006/42/EC Machinery Directive

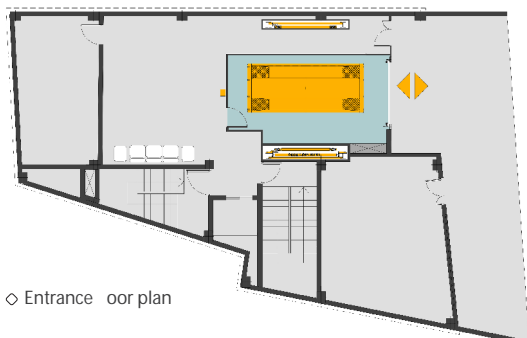
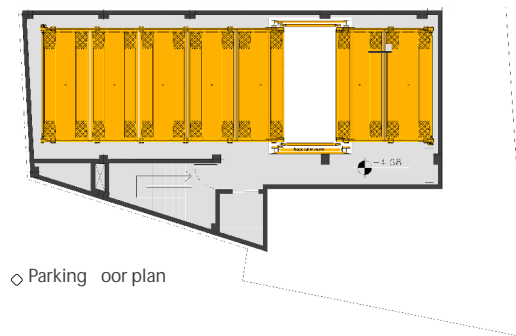
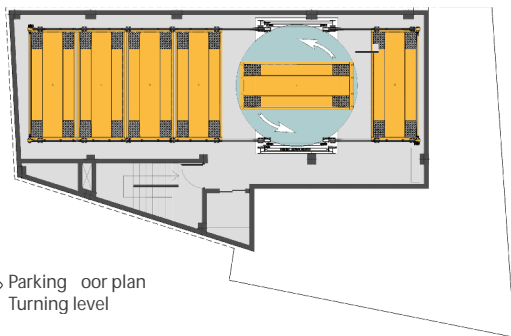
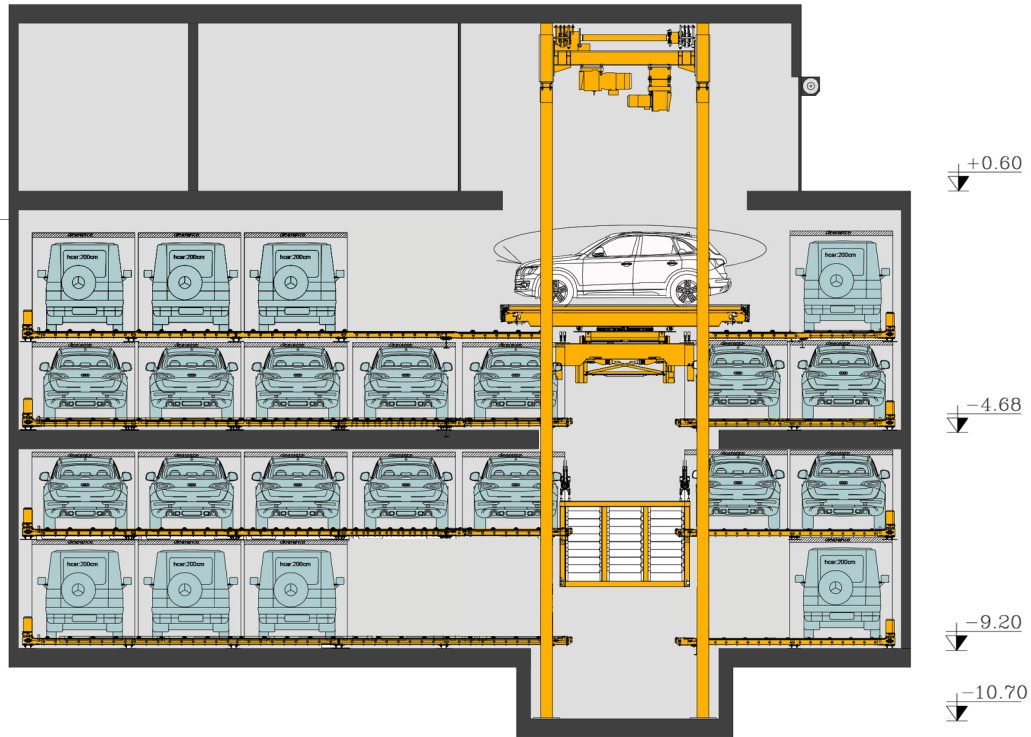
EN 14010 Safety of machinery - Equipment for power driven parking of motor vehicles
Safety and EMC requirements for design, manufacturing, erection and commissioning stages



Standart : EN 14010



◆ Dibaji , Fully Automated Parking System
 Technical Specifications



◇ In the previous design of the project, whole parking capacity was 2. Thanks to Parkule systems it was increased up to 22.

- ◇ separate car and people route
- ◇ compatible with fire terms
- ◇ drive in/out forwards
- ◇ adapting to the unique building necessities and constraints.
- ◇ minimum personnel requirements
- ◇ ventilation, lighting and energy savings.
- ◇ high security and safety level allowing for less insurance cost.
- ◇ optimal parking and retrieval time
- ◇ safe and secure parking away from risks such as theft, accident, etc.
- ◇ suitable for disabled people, easy parking at the large entry room.